



Betta

CARE GUIDE



FLUVAL BETTA CARE GUIDE



More commonly known as Siamese fighting fish, *Betta splendens* (*B. splendens*) have a longstanding history in the aquarium hobby. In fact, the first record of importation to USA dates all the way back to 1927. In nearly a century, *B. splendens* have flourished into one of the most popular fish today, and for good reason. They are not only widely available in a variety of spectacular colors and fin types, but are also easy to keep, making them an ideal choice for both new and experienced fish keepers.

In Southeast Asia, *B. splendens* are typically found in rice paddies, ponds and small streams. These bodies of water tend to be shallow, slow-moving, quite warm and low in oxygen.

B. splendens are so popular now that they are extensively featured in shows and contests throughout the world. For example, Major specialty groups such as the International Betta Congress currently hosts 40 professionally organized major Betta events on an annual basis.

With such strong interest, Fluvial has extensively researched *B. splendens*, gathering as much information as possible and communicating with species experts, biologists, breeders, specialty groups and advanced hobbyists arriving at an appropriate and well curated range of habitat and accessories devoted exclusively to *B. splendens*.

For Fluvial it was essential to remain as true as possible to their natural habitat and

living conditions, keeping in mind the unique features and varieties of the captive-bred species.

The following is a condensed version of the knowledge that was collected, and the foundation from which our all-new Fluvial Betta line was developed.

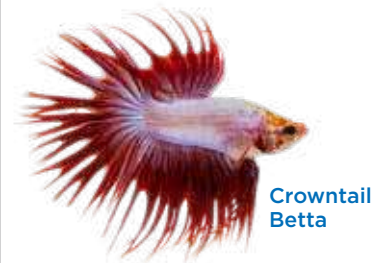
DID YOU KNOW?

During the 1800s, the people of Southeast Asia hosted "Siamese fighting fish" competitions. They took these events very seriously, sometimes betting as much as their homes on certain battles.

ORIGINS

If you combined all of the different colors and unique fin types, there are over 20,000 possible varieties of *Betta splendens*.

- The Modern-Day Betta Colors by Adam Short
<https://bettafishcenter.com/modern-betta-colors.shtml>



Though wild *B. splendens* can be found in Cambodia, Laos, Vietnam, Malaysia and Thailand, the stunning specimens we often see in captivity today are the result of selective breeding that combined a variety of species, including the wild types of *Betta imbellis*, *Betta mahachaiensis*, *Betta smaragdina* and *B. splendens* itself.



Terraced rice paddies in Thailand

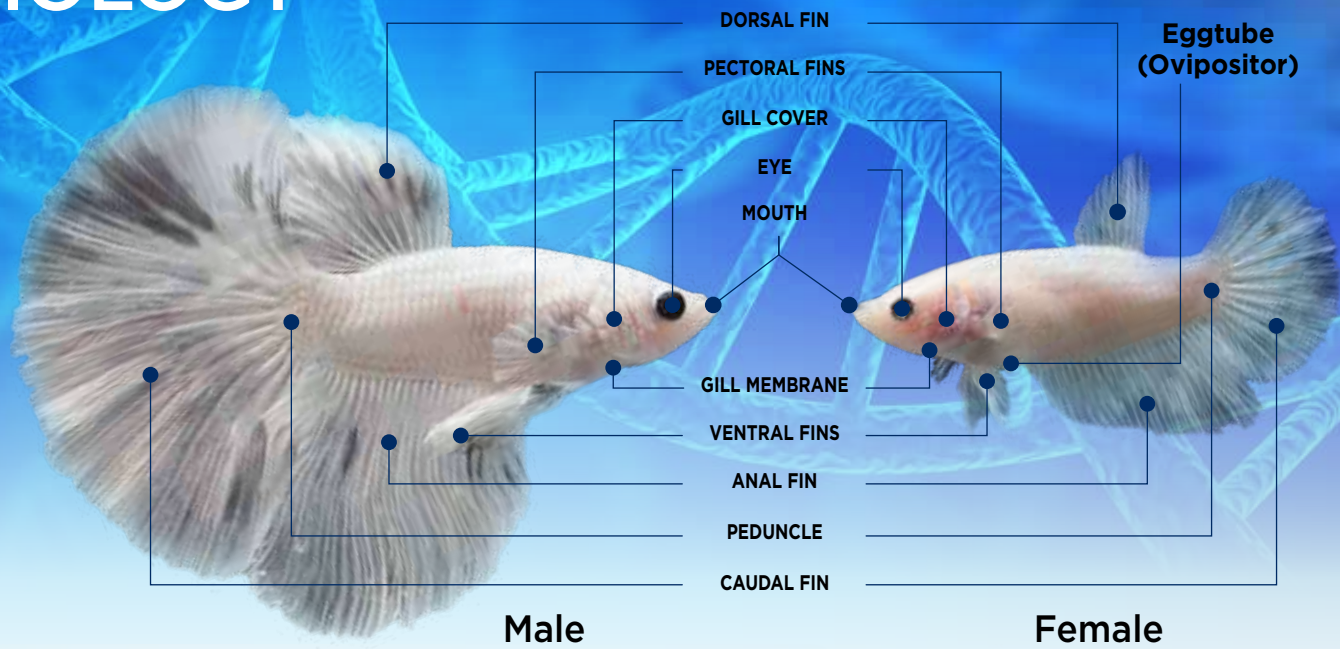
In Southeast Asia, *B. splendens* are typically found in rice paddies, ponds and small streams. These bodies of water tend to be shallow, slow-moving, quite warm and low in oxygen. The habitats are also commonly dense in vegetation, which not only helps keep the fish safe from predators, but also provides the males with an easily established and defensible territory.

FACT

In their natural habitat, Bettas are often surrounded by leaf litter from surrounding trees, which turns the water a tea color. They can easily travel through such vegetation, even jumping from one self-contained area to another.



BIOLOGY



Male

Female

FACT

Male and female Bettas are distinctly different. Males are typically more colorful, have larger fins and can grow up to 3" / 7.5 cm long, while females present more subdued coloring, have shorter fins and reach up to 2" / 5 cm in length. No matter the gender, Bettas typically live for 3-5 years.

ANATOMY

Like all other tropical fish, *B. splendens* have gills and take in dissolved oxygen via water most of the time.

Even in well oxygenated water, however, *B. splendens* will still take gulps of air from the surface. This behavior is perfectly normal, and came about due to the lower oxygen content found in their natural tropical habitats.

Like all anabantids, *B. splendens* evolved to develop a special labyrinth organ, which allows them to breathe surface air. This organ is an extension of their gill plates (bones that anchor the gills), composed of many folds of bone. Interestingly, *B. splendens* are not born with this organ - it develops as they mature.

The fish's body is covered with scales that overlap each other like the shingles on a roof. These scales consist of thin transparent plates that help protect the Betta's body from injury and add streamlining for efficient gliding. A mucus layer also covers the scales to provide the fish with extra smoothness to protect against invading parasites and infection.

BIOLOGY

EXAMPLES OF TAIL TYPES



Rosetail



Halfmoon



Veiltail



Crowntail



Delta



Double tail

B. splendens have an upturned mouth, which allows them to easily feed on various insects and larvae at the water surface. It also helps them to build bubble nests.

Bubble nests are produced by healthy male *B. splendens*. They will repeatedly take air from the surface and, using their saliva, blow small bubbles into a crowded "nest" formation. Floating plants are ideal when it comes to building a nest as they provide a suitable anchoring point.

During spawning, once the female approves of the nest, the male and female wrap around each other and begin mating. Once the eggs are released, the male picks them up and deposits them into the nest.

Females notoriously eat the eggs, so it's best to remove them immediately after spawning.

DID YOU KNOW?

At the time of writing, 73 Betta species are officially recognized in the world, although the International Betta Congress recognizes up to 80. Some of the more well-known species include: *B. albimarginata*, *B. channoides*, *B. imbellis*, *B. macrostoma*, *B. smaragdina*, and the ubiquitous *B. splendens*.

FACT

A male Betta will create bubble nests even if there are no females around.



FISH COMPATIBILITY



BETTA TANK MATES



Corydoras



Tetras



Rasboras

Male *B. splendens* are not a very sociable fish. Males are best kept alone to avoid fighting, which can result in torn fins or other damage.

Female *Betta splendens* can sometimes be kept together, although it is not usually recommended as some can also be aggressive.

While male *B. splendens* are not sociable, they can sometimes be successfully kept with some species such as dwarf or small Corydoras, smaller peaceful tetras, rasboras and livebearers (with the exception of guppies). Keep in mind that *B. splendens* do vary in temperament, there is no guarantee that a particular specimen won't chase or attack tankmates, even those mentioned previously. **Should you experience any incompatibility, isolating the *B. splendens* will be necessary.** It's best to avoid keeping *B. splendens* with other anabantids or fast-moving species altogether, especially those that have a tendency to nip the fins of their tankmates.

Betta fish do perfectly well when kept on their own. Doing so allows their amazing fins to fully develop as they avoid any fin-nipping tankmates. Furthermore, *B. splendens* eat relatively slowly, so keeping them individually ensures they will feed properly because they won't have to compete with other fish for food. Lastly, in their natural habitat, males lead a solitary life and only come together with a female in order to breed. Considering Bettas are typically aggressive in nature with an innate tendency to defend their territory (and will fight to do so), it's generally recommended to keep them in separate tanks.

HABITAT ESSENTIALS

AQUARIUM SIZE MATTERS

When it comes to the ideal aquarium size for *B. splendens*, there are certain conditions to keep in mind.

If the aquarium is too small, maintaining optimal water conditions will be difficult. If the aquarium is too large, keeping water movement to a minimum while adequately filtering and heating the aquarium will become a challenge. That said, a 2-5 US Gal / 7.5-20 L aquarium is usually recommended. *B. splendens* are slow moving and not the greatest of swimmers, so this size range provides them with ample space to move around. It also permits the growth of certain live aquatic plants, which is advantageous.

In the wild, *B. splendens* inhabit slow, gentle moving bodies of water, therefore, captive bred varieties (particularly those with large fins) should be kept in similar conditions.

FILTRATION & MEDIA

The filter is one of the most important components of your Betta aquarium. In addition to providing water movement, it will help facilitate the removal of toxins that build up over time in an enclosed environment. Regular replacement of necessary media will not only keep your aquarium clean, but also reduce overall maintenance time.

HEATING

In the wild, *B. splendens* live in tropical climates, so maintaining warmer temperatures in captivity is important - particularly because the domestic varieties are not as resilient as their wild counterparts.

They will thrive in a temperature range of 76-82 °F / 25-27 °C. If the temperature falls below the comfort range, the Betta will become less active and lose its appetite. If the condition is not remedied, it will become ill.

LIGHTING

B. splendens prefer to be kept under soft, subdued lighting. Floating plants can be used to help diffuse light and recreate the densely planted and shadowy waterways they inhabit in the wild. Including these types of plants will not only help relax your fish and provide an anchor point for bubble nests, but also provide ideal conditions that accentuate their colors.

NUTRITION ESSENTIALS

FACT

Bettas can survive for up to 2 weeks without food, so there's no need to panic if they don't eat when you first bring them home as they're often adjusting to their new surroundings.



(Item #A6575)
<https://fluvalaquatics.com/ca/product/betta-formula/>



BUG BITES
Beta Formula
is a Super food:

- Excellent amino acid profile
- High in protein
- Low in carbs
- Environmentally sustainable
- No exoskeleton - easily digestible
- Appealing taste fish crave
- Excellent nutrient profile for Bettas
- Floating / slow sinking, ideal for *B. splendens*



QUALITY INGREDIENTS

BUG BITES™ are more than just insects. We've included other excellent protein sources like whole salmon, which is rich in Omega 3 and 6 for healthy skin, scales, fins and colors. We've also added essential vitamins, minerals, amino acids and other trace nutrients that are vital to the health of your fish, while avoiding artificial colors and preservatives to make BUG BITES™ a completely nutritious and balanced food.

NUTRITION

B. splendens is a carnivorous fish that typically feeds on mosquito larvae and pupae in the wild. Feeding a healthy and balanced diet will help to promote increased energy levels, vibrant coloration, and the growth of long, beautiful fins. A variety of food types should always be offered, including granules and flakes, freeze dried foods, frozen foods and live foods if possible.



DIET

The main part of a *B. splendens*' diet should be a quality dry fish food rich in protein (preferably from an insect source). Several smaller feedings per day are ideal, however, one larger feeding is an acceptable alternative. In the case of one daily feeding, offer as much food as the fish can consume in 30 seconds, making sure to remove any uneaten portions afterwards.

A good rule of thumb when feeding Bettas is to remember that their stomach is about the size of their eyeball. Since the dawn of time, insects have been hunted in the wild as they offer a widely available, nutrient-rich food source. And since Betta fish are no different in this regard, Betta Formula BUG BITES is the perfect food for them. This instinctive feeding habit is the foundation behind BUG BITES™, which are formulated with Black Soldier Fly Larvae as the #1 ingredient in most formulas.



BUG BITES
INSECT LARVAE RECIPE FISH FOOD

WATER ESSENTIALS



Swimming amidst *Bolbitis* plants

PLANTS & DÉCOR

While some wild *B. splendens* habitats can be muddy and cloudy, many are clear due to the abundant surrounding vegetation, which acts as a natural filter. For this reason, keeping live plants in your Betta Premium Aquarium Kit is recommended. You can choose from Southeast Asian species that tolerate warmer temperatures such as *Vallisneria natans* and *Hygrophila difformis*, or opt for African plants like *Bolbitis* or *Anubias*, which do relatively well in subdued lighting conditions.

Introducing tannins into the aquarium through certain decorative pieces will help to support a slightly acidic pH level and lightly stain the water, creating subdued lighting that is more natural for *B. splendens*.

Terminalia catappa (also known as the Indian or Sea Almond tree) grows mainly in the tropical regions of Asia, Africa, and Australia.



Terminalia catappa leaves & bark

INDIAN ALMOND LEAVES & BARK

Terminalia catappa leaves and bark help to promote spawning and disease resistance. As part of a well balanced aquarium, they can also help to maintain ideal water parameters.



Malaysian Driftwood

DRIFTWOOD

Malaysian driftwood is also a good choice for your aquarium, providing a natural amber or brown tint to the water that accentuates fish colors.

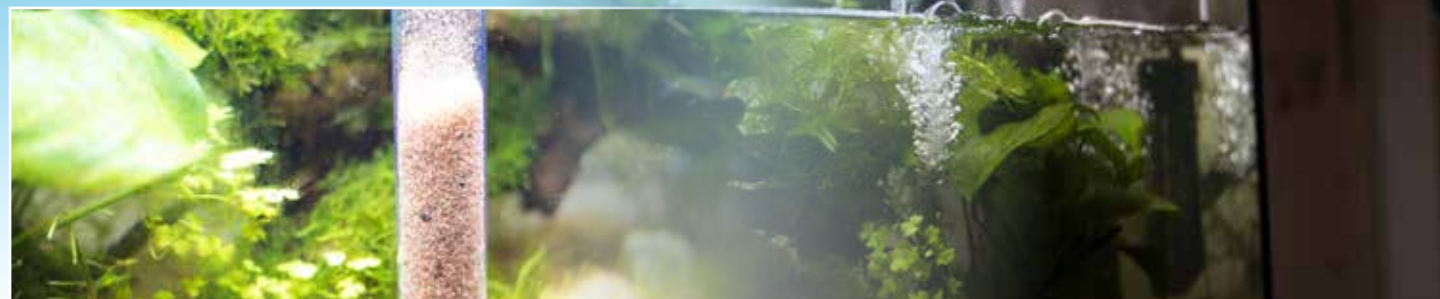
FACT

While domestic varieties can adapt well to a wide range of levels, *B. splendens* are ideally kept in relatively soft water with a pH range of 6.5-7.0.

MAINTENANCE ESSENTIALS

AQUARIUM MAINTENANCE

Provided your fish is not overfed, maintenance requirements should be minimal. Every week perform a partial water change by removing 25-50% of the aquarium's existing water and use a gravel cleaner to remove any waste from the substrate.



Water changes should be done weekly

New water added back into the aquarium should always be treated with an aquarium safe water conditioner. This is due to the fact that most tap water includes heavy metals, chlorine and chloramine, which are harmful to fish if left untreated.

Removing waste is essential to a healthy aquarium

Fluval water care products help keep the environment in your new Betta Premium Aquarium safe and healthy for your *B. splendens*.



FACT

Tap water usually has added chemicals like chlorine, to make it safe for human consumption. These chemicals make tap water unsafe and harmful (or even fatal) to a Betta fish. Water conditioners remove these chemicals from your tap water in seconds.

BettaPlus Water Conditioner (Item #A8334)

- Neutralizes harmful metal toxins, chlorine & chloramine from tap water
- Herbal extracts reduce fish stress caused from transportation, handling and acclimatization
- Coats delicate scales and fins to protect against minor abrasions
- Use when performing water changes, setting up a new tank, transporting fish & healing wounds



Cycle Biological Enhancer (Item #A8348)

<https://fluvalaquatics.com/ca/product/biological-enhancer-2/>

Ensure healthy populations of beneficial nitrifying bacteria are always present in the aquarium, which contributes to improved water quality that supports the health and longevity of *B. splendens*.



Betta Enviro Clean (Item #A8335)

- Establishes a supportive team of beneficial bacteria that naturally help keep interior surfaces clean and free of organic accumulation
- Infused with beneficial bacteria that breaks down waste & promotes clean water & living conditions
- Ideal for new aquarium set-ups & as part of your regular maintenance routine
- For best results, use in combination with Cycle Biological Enhancer



INSPIRED BY NATURE. DEVELOPED BY FLUVAL

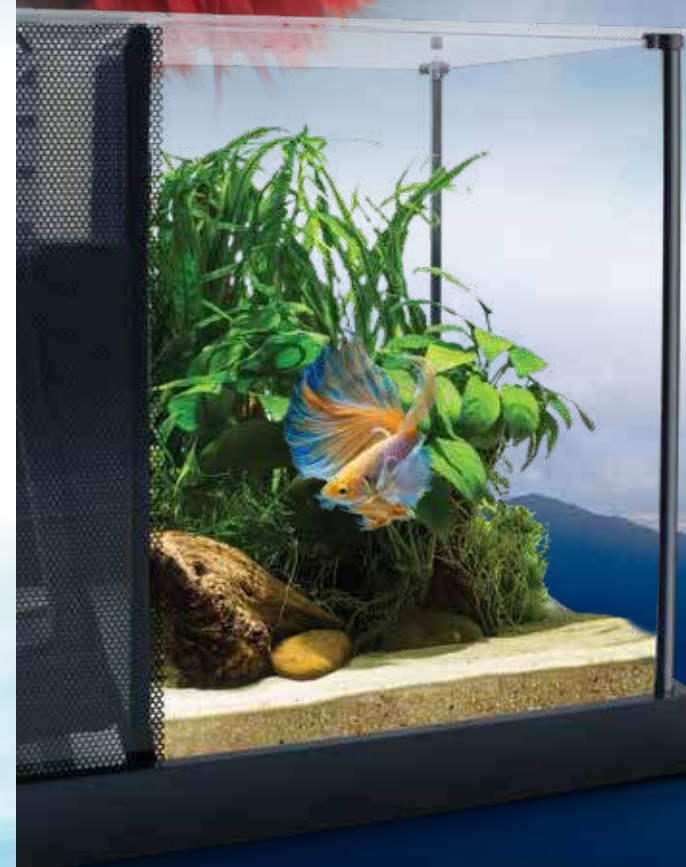
Fluval has taken decades of hobby experience and expert knowledge to create the ultimate Betta habitat and accessory offering.



The Ultimate Betta Habitat

Fluval firmly believes the development of products for the home aquarium should incorporate elements from the species' natural habitats.

The kit is specifically designed to replicate the tropical habitats of this popular fish species, and comes equipped with multistage diffused filtration, soft LED lighting and a convenient pre-set heater – all tailor-made for *Betta splendens*.



Betta Premium Aquarium Kit 2.6 US Gal. / 10 L

- Suitably sized for a single male or female *B. splendens*, providing ample room to swim freely
- Easy to maintain optimal water conditions
- Allows for recommended live plant growth



CUSTOM BETTA FILTRATION



In the wild, Bettas inhabit slow, gentle moving bodies of water. Captive-bred varieties typically possess extravagant, flowing finnage and as such are poor swimmers. Therefore, the need for gentle, diffused water movement is extremely important.

In a contained aquarium, there are a range of challenges to consider that differ from wild habitats, such as limited surface area and gas exchange. These factors can put a strain on the aquarium; therefore, conditioners, supplements and filter media are necessary to keep things in balance and create ideal conditions that mimic those found in nature. They make water safe for aquarium use by removing harmful waste/toxins and adding beneficial bacteria to the environment.



Intake

GENTLE INTAKE

Multiple slots provide a greater area for slow water entry, helping to protect delicate Betta fins.

WATER MOVEMENT

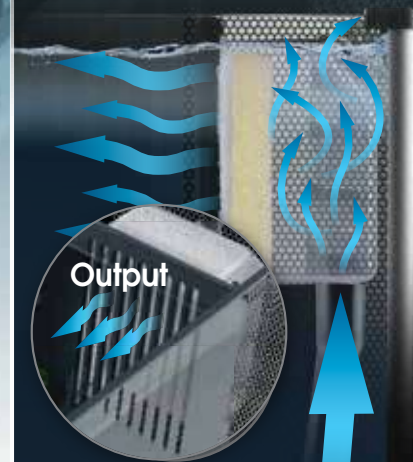
The aquarium features an expanded array of intake slots to reduce the intensity of the flow and prevent the fish from getting stuck to the intake.

The unique Diffusion Chamber significantly reduces water movement via the widening of the output and multiple layers of sponges.

The end result is gentle, diffused water movement and turnover in the aquarium.

THE BEST FILTERED BETTA AQUARIUM

B. splendens are typically found in habitats naturally dense with vegetation. These bodies of water are extremely clean as they are extensively filtered by the plants. As a result, both wild and captive-bred *Betta splendens* prefer very well-filtered environments.



Output

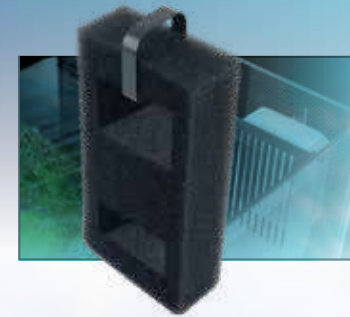
DIFFUSION CHAMBER (PATENT PENDING)

Patent pending Diffusion Chamber disperses flow before polishing and returning water back into the aquarium, mimicking the clean, slow-moving currents of wild *Betta splendens* habitats.

CUSTOM BETTA FILTRATION

UP TO 6 STAGES OF FILTRATION

For maximum water quality and clarity



FOAM BLOCK (Mechanical Item #A1376)

<https://fluvalaquatics.com/ca/product/spec-evo-flex-foam-filter-block/>

Provides effective mechanical filtration by trapping large particles and debris



CARBON (Chemical, Item #A1377)

<https://fluvalaquatics.com/ca/product/spec-evo-flex-replacement-carbon/>

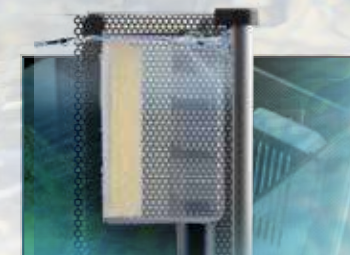
Effective at removing heavy metals, odors, discolorations, organic contaminants and pollutants



BIOMAX (Biological, Item #A1378)

<https://fluvalaquatics.com/ca/product/spec-evo-flex-biomax/>

Porous rings allow beneficial bacteria to thrive while helping to reduce and control ammonia and nitrite



DIFFUSION CHAMBER PAD (Mechanical, Item #A1337)

<https://fluvalaquatics.com/ca/product/spec-evo-flex-foam-filter-block/>

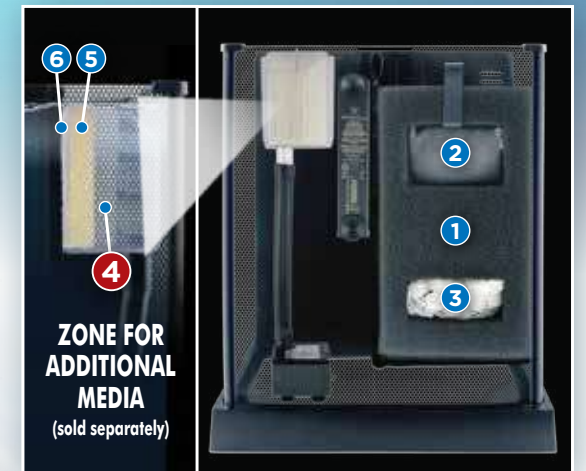
Helps diffuse flow and polish water for ultimate clarity



RESIN-INFUSED PADS FOR DIFFUSION CHAMBER

(Mechanical, Chemical, Biological, Item #A1333, Item #A1334, Item #A1335,) sold separately <https://fluvalaquatics.com/ca/product-category/filtration-media/filtration-media-media/media-aquarium/flex/>

Provides additional cleaning stage to trap debris, diffuse water flow and perform specific filtration applications



ZONE FOR ADDITIONAL MEDIA (sold separately)

Stage 1 – Mechanical foam block*

Stage 2 – Chemical carbon insert*

Stage 3 – Biological BioMax*

Stage 4 – Chemical resin infused pad (opt.)

Stage 5/6 – Mechanical Diffusion Chamber pad*

Oversized mechanical foam block (Stage 1-3) Features 2 openings for chemical or biological media inserts

Diffusion Chamber (Stage 4-6)

Offers 2 spaces for filter media: Diffusion Chamber pad* + resin-infused pad

* Included with Betta Premium Aquarium Kit

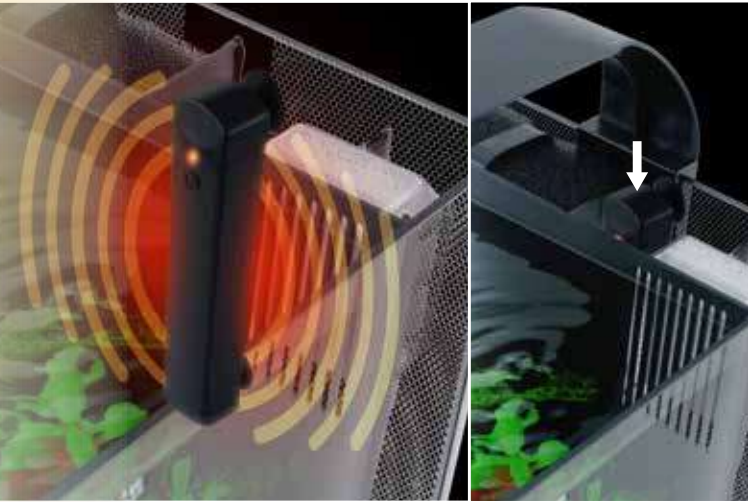
CUSTOM BETTA HEATING



FULLY INTEGRATED PRE-SET HEATER

As *B. splendens* live in tropical climates in the wild, recreating warmer temperatures for domestic varieties is important. If not kept warm enough, specimens can become less active, lose their appetite and fall ill. Bettas typically thrive in a temperature range of 76-82 °F (25-27 °C).

- The Fluval Beta Premium Aquarium kit is equipped with a fully integrated pre-set submersible heater
- Fits seamlessly into rear chamber compartment and provides most optimal dispersal of heated water
- Consistently maintains ideal tropical habitat water temperature (78 °F / 26 °C)
- Pre-set – no hassle, no fuss, maintains correct water temperature without any additional thought



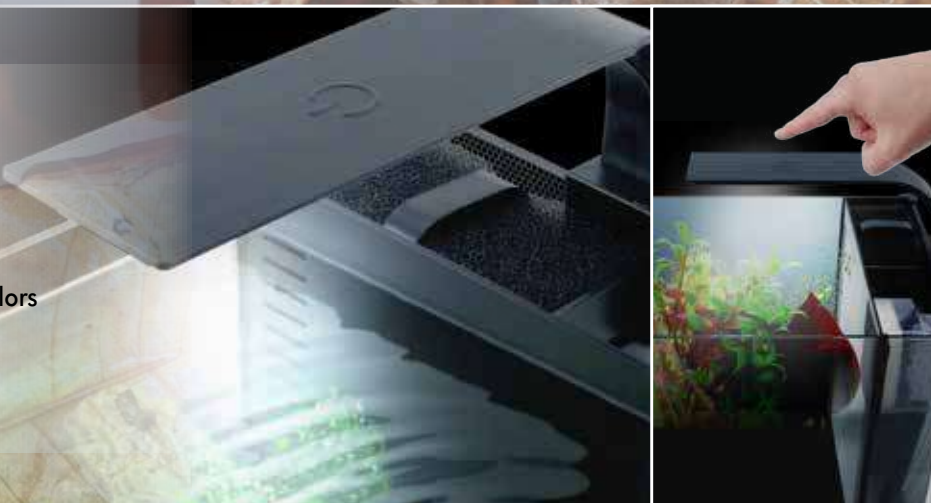
CUSTOM BETTA LIGHTING



LED LIGHTING

In captivity, *B. splendens* prefer to be kept under soft, subdued lighting. Doing so helps them feel more comfortable, makes their colors look nicer, and provides a more natural aesthetic look to the tank.

- The Fluval Beta Premium Aquarium kit features Natural Soft-Glow LED Lighting
- Offers a relaxed atmosphere and mimics a Betta's naturally shaded wild habitat
- Calibrated to accentuate vibrant Betta colors
- Compatible with most mechanical and digital timers



INSPIRED BY NATURE
FLUVAL[®]
BUILT BY FLUVAL



FLUVAL 
fluvalaquatics.com

Fluval and Hagen are registered trademarks of Rolf C. Hagen Inc.